



PRDM3 Polyclonal Antibody

Catalog No	YP-Ab-01956
Isotype	IgG
Reactivity	Human;Rat;Mouse;
Applications	WB;IHC;IF;ELISA
Gene Name	MECOM
Protein Name	MDS1 and EVI1 complex locus protein MDS1
Immunogen	The antiserum was produced against synthesized peptide derived from human MECOM. AA range:1-50
Specificity	PRDM3 Polyclonal Antibody detects endogenous levels of PRDM3 protein.
Formulation	Liquid in PBS containing 50% glycerol, 0.5% BSA and 0.02% sodium azide.
Source	Polyclonal, Rabbit,IgG
Purification	The antibody was affinity-purified from rabbit antiserum by affinity-chromatography using epitope-specific immunogen.
Dilution	WB: 1/500 - 1/2000. IHC: 1/100 - 1/300. ELISA: 1/20000.. IF 1:50-200
Concentration	1 mg/ml
Purity	≥90%
Storage Stability	-20°C/1 year
Synonyms	MECOM; MDS1; MDS1 and EVI1 complex locus protein MDS1; Myelodysplasia syndrome 1 protein; Myelodysplasia syndrome-associated protein 1
Observed Band	18kD
Cell Pathway	histone deacetylase complex,nucleus,nucleoplasm,cytoplasm,Golgi apparatus,cytosol,aggresome,nuclear speck,intracellular membrane-bounded organelle,
Tissue Specificity	Kidney,Pancreas,
Function	disease:A chromosomal aberration involving EVI1 is a cause of chronic myelogenous leukemia (CML). Translocation t(3;21)(q26;q22) with RUNX1/AML1.,disease:A chromosomal aberration involving MDS1 is found in a form of acute myeloid leukemia (AML). Translocation t(3;21) with AML1.,miscellaneous:Can be produced either as a separate transcript and as a normal fusion transcript with EVI1.,PTM:Phosphorylated upon DNA damage, probably by ATM or ATR.,similarity:Contains 10 C2H2-type zinc fingers.,subunit:May interact with CTBP1.,
Background	The protein encoded by this gene is a transcriptional regulator and oncoprotein that may be involved in hematopoiesis, apoptosis, development, and cell differentiation and proliferation. The encoded protein can interact with CTBP1, SMAD3, CREBBP, KAT2B, MAPK8, and MAPK9. This gene can undergo



translocation with the AML1 gene, resulting in overexpression of this gene and the onset of leukemia. Several transcript variants encoding a few different isoforms have been found for this gene. [provided by RefSeq, Mar 2011],

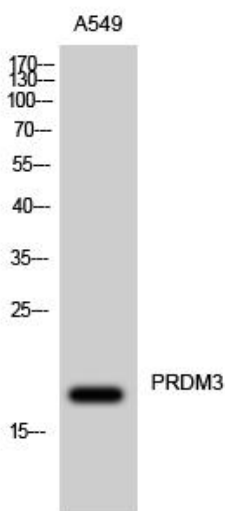
matters needing attention

Avoid repeated freezing and thawing!

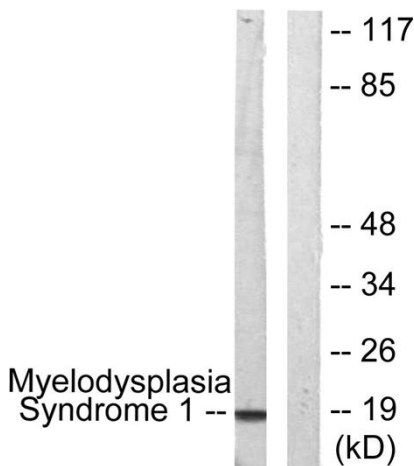
Usage suggestions

This product can be used in immunological reaction related experiments. For more information, please consult technical personnel.

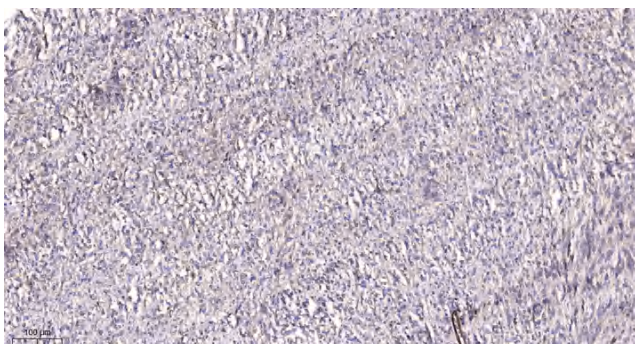
Products Images



Western Blot analysis of A549 cells using PRDM3 Polyclonal Antibody cells nucleus extracted by Minute TM Cytoplasmic and Nuclear Fractionation kit (SC-003, Inventbiotech, MN, USA).



Western blot analysis of lysates from A549 cells, using Myelodysplasia Syndrome 1 Antibody. The lane on the right is blocked with the synthesized peptide.



Immunohistochemical analysis of paraffin-embedded human Colon cancer. 1, Antibody was diluted at 1:200(4° overnight). 2, Tris-EDTA, pH9.0 was used for antigen retrieval. 3, Secondary antibody was diluted at 1:200(room temperature, 45min).